

# Mi Luz

Manny Rosado

## INTRO:

E E/D F#m B sus4 B



## ESTROFA:

E D F#m/C# E



5

E D A/C# B sus4 B A B sus4 B



9

## CORO:

C#m B E/G# A B



15

C#m B E/G# A E/G# F#m B



D.C. al Fine

19

## PUENTE:

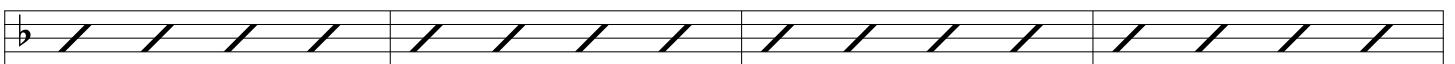
G A/G F#m Bm A G A sus4 Bb F F/A



24

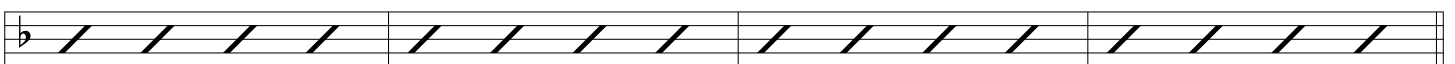
## CORO:

Bb C Dm C F/A



31

Bb C Dm C F/A




35

2 OUTRO:

Mi Luz

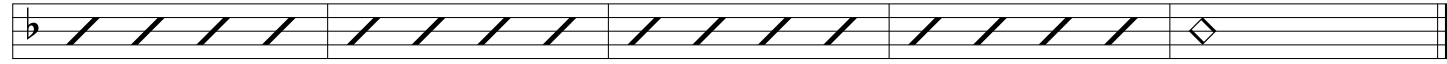
B $\flat$  F/A Gm C sus4 C



39

Detailed description: This block contains the first line of musical notation. It features a treble clef and a key signature of one flat (B-flat). The staff is divided into three measures, each containing a diagonal slash to indicate a measure rest. Above the staff, the chords B-flat, F/A, Gm, C sus4, and C are written above their respective measures. The measure number 39 is written below the first measure.

F E $\flat$  Gm C7sus4 C F



42

Detailed description: This block contains the second line of musical notation. It features a bass clef and a key signature of one flat (B-flat). The staff is divided into five measures, each containing a diagonal slash to indicate a measure rest. Above the staff, the chords F, E-flat, Gm, C7sus4, C, and F are written above their respective measures. The measure number 42 is written below the first measure.